

Contents

The Quick Guide is not intended as a substitute for your *Owner's Manual*. We strongly encourage you to review the *Owner's Manual* and supplementary manuals so you will have a better understanding of your vehicle's capabilities and limitations.

Overview

Topic 1

Entering and Exiting

- Keys ▶ P.7
- Smart Access System with Push-button Start ▶ P.8
- Theft Deterrent System ▶ P.9



Topic 2

Before Driving

- Seats ▶ P.11
- Driving and Seat Position Memory System ▶ P.12
- Head Restraints ▶ P.13
- Seatbelts ▶ P.13
- Outside Rear View Mirrors ▶ P.14
- Anti-glare Inside Rear View Mirror ▶ P.14
- Steering Wheel ▶ P.15

Topic 3

When Driving

- Starting ▶ P.17
- Automatic Transmission ▶ P.18
- Parking Brake ▶ P.19
- Emergency Flasher Switch ▶ P.19
- Turn Signal Lever ▶ P.20
- Intuitive Parking Assist ▶ P.20
- Multi-information Display ▶ P.21



- Cruise Control ▶ P.22
- Dynamic Radar Cruise Control ▶ P.23



Topic 4

Rain and Night Driving

- Headlights ▶ P.25
- Fog Lights ▶ P.26
- Windshield Wipers and Washers ▶ P.26
- Rear Window and Outside Rear View Mirror Defoggers ▶ P.27
- Instrument Panel Light Control ▶ P.27

Topic 5

Driving Comfort

- Audio System ▶ P.29
- Air Conditioning System ▶ P.32
- Garage Door Opener ▶ P.33
- Ashtrays ▶ P.35
- Glove Box ▶ P.35
- Auxiliary Box ▶ P.35
- Console Boxes ▶ P.36
- Interior Lights ▶ P.36
- Cup Holders ▶ P.37



- Compass ▶ P.37
- Seat Heaters and Ventilators ▶ P.38
- Rear Sunshade ▶ P.38
- Trunk Storage Extension ▶ P.39
- Luggage Mat ▶ P.39



Topic 6

Opening and Closing

- Door Locks ▶ P.41
- Power Windows ▶ P.42
- Trunk ▶ P.42
- Fuel Tank Cap ▶ P.43
- Hood ▶ P.43
- Moon Roof ▶ P.44

What to do if ...



Responding to warning/indicator lights and other problems that may arise.

Customizing Your Lexus

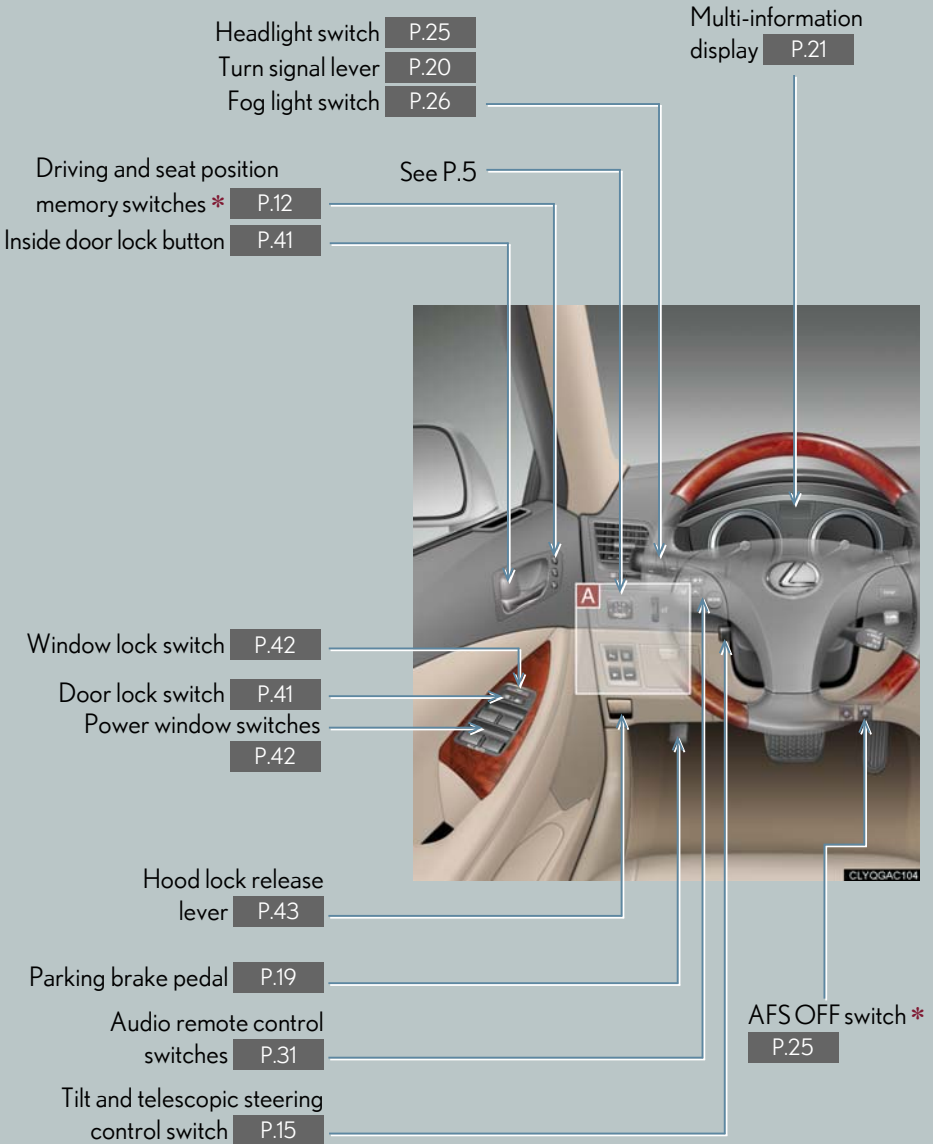


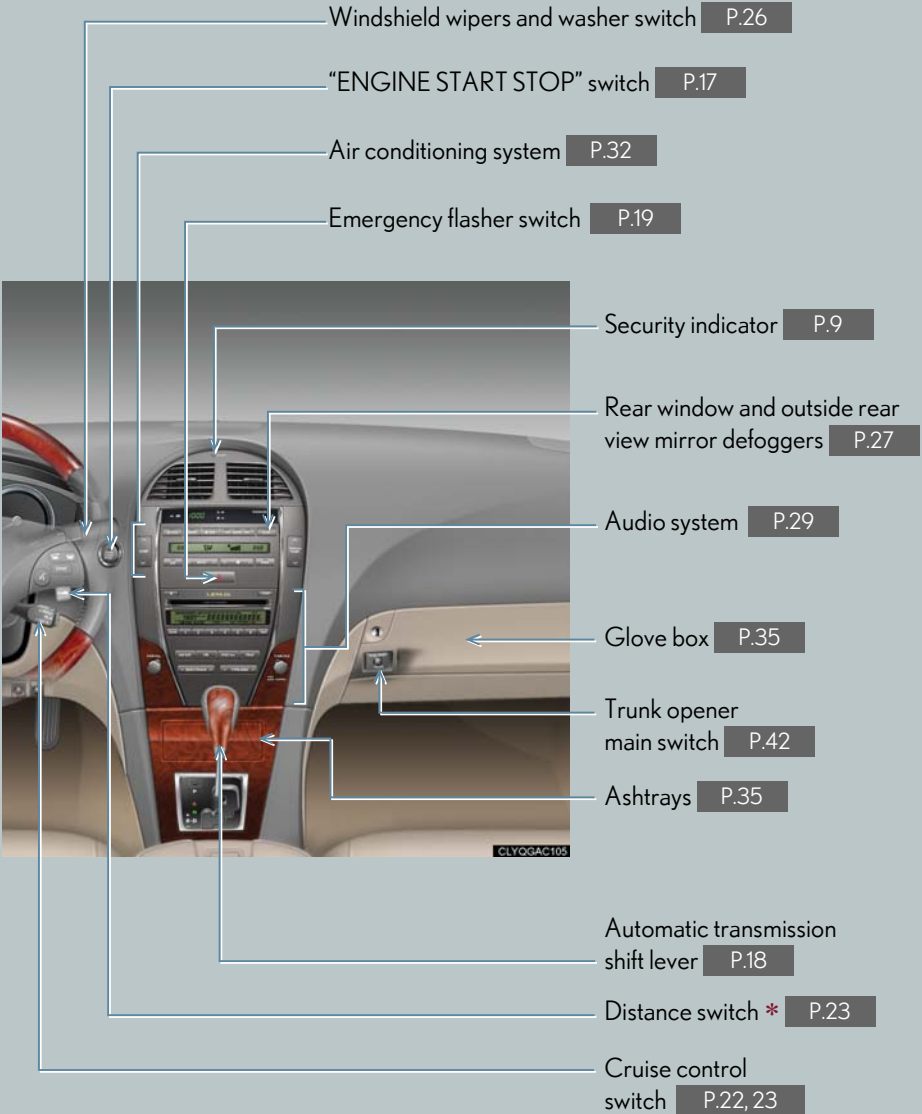
A list of features that can be customized.

Depending on specifications, the vehicle shown in the illustration may differ from your vehicle in terms of color and equipment.

Overview

Instrument Panel



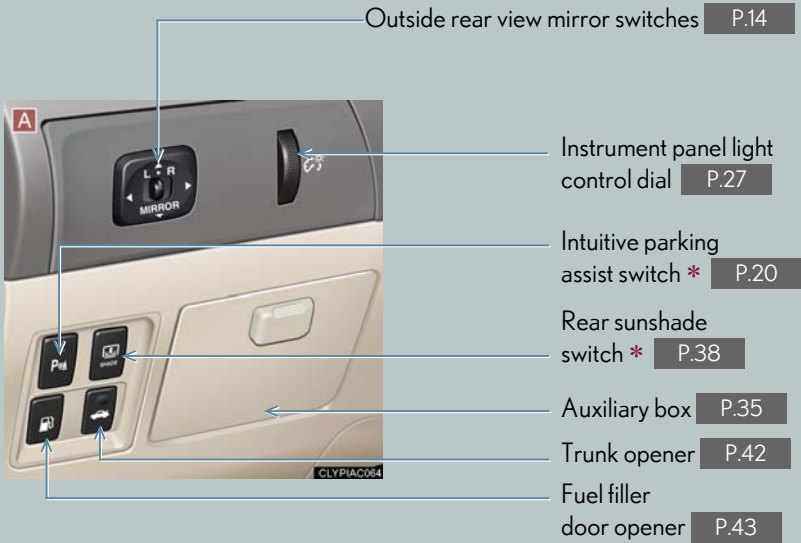


* : If equipped

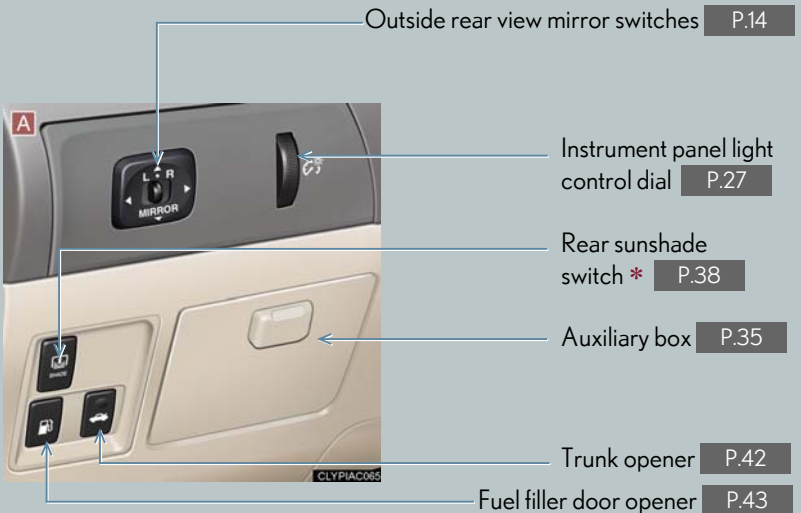
Overview

Instrument Panel

► Type A



► Type B



* : If equipped



Topic 1

Entering and Exiting

Keys	7
Smart Access System with Push-button Start	8
Theft Deterrent System.....	9



Keys

Electronic key



Smart access system with push-button start
(→P.8, 17)

Mechanical key



- Locks and unlocks the doors
- Locks and unlocks the glove box
- Locks and unlocks the armrest door

The mechanical key is stored inside the electronic key. To extract the key, release the latch and pull.


Wireless remote control



- 1 Locks the doors
- 2 Unlocks the doors
- 3 Opens the trunk
- 4 Sounds the alarm

Use the alarm to attract attention to the vehicle in order to help deter break-ins.
(To stop the alarm, push any button on the wireless remote control.)

The wireless remote control can also be used to open the windows and moon roof (standard type).

To do so, simply press and hold  button.

Smart Access System with Push-button Start

The smart access system with push-button start allows you to enter and exit the vehicle or start the engine by simply carrying the electronic key in your pocket or bag. For details on starting the engine, see page 17.

Entering the vehicle



To unlock the vehicle, simply grasp any of the door handles.

Exiting the vehicle



To lock the vehicle, press the lock button on any of the door handles.

To close the windows and the moon roof (standard type), press and hold the lock button.

Opening the trunk



To open the trunk, press and hold the trunk release button.

For details on what to do when the electronic key battery becomes discharged, see page 48.



Theft Deterrent System

The theft deterrent system includes the following features to help protect your vehicle from theft.

Engine immobilizer system



The engine immobilizer system prevents the engine from being started in the event that an attempt is made to start the vehicle using an unregistered key.

The security indicator light flashes to indicate that the system is set.

Alarm

The system sounds the alarm and flashes lights when forcible entry is detected.

To set the alarm: lock all the doors from outside the vehicle. The security indicator light comes on to indicate that the alarm is in its preparation state. When the indicator light begins to flash, the system is armed.

To deactivate or stop the alarm: start the engine, or unlock the doors or trunk using the electronic key or the wireless remote control.

Steering lock



The steering wheel locks when the "ENGINE START STOP" switch is in OFF mode.

To release the steering wheel lock, gently turn the wheel left or right while pressing the "ENGINE START STOP" switch.



Topic 2

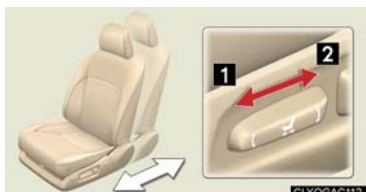
Before Driving

Seats	11
Driving and Seat Position	
Memory System.....	12
Head Restraints	13
Seatbelts.....	13
Outside Rear View Mirrors	14
Anti-glare Inside Rear View Mirror.....	14
Steering Wheel	15



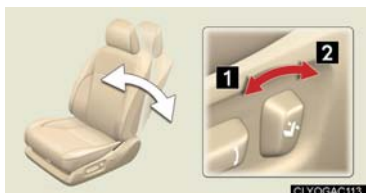
Seats

■ Adjusting seat position



- 1 Moves the seat forward
- 2 Moves the seat backward

■ Adjusting seatback angle



- 1 Tilts the seatback forward
- 2 Reclines the seatback

■ Adjusting the seat cushion



- 1 Raises and lowers the front of the cushion
- 2 Raises and lowers the entire seat

■ Adjusting the lumbar support



- 1 Firmer
- 2 Softer

■ Adjusting the seat cushion length (if equipped)



- 1 Longer
- 2 Shorter

Driving and Seat Position Memory System (If Equipped)

The seats can be returned to a previously set position by simply pressing a button.

The position of the steering wheel and the outside rear view mirrors is adjusted along with the driver's seat.

Positions can be conveniently recorded for the vehicle's primary drivers and passengers.

Setting memory positions



While holding down the SET button, press and hold one of the memory buttons (1 or 2) until you hear a beep.

The current position of the seat, as well as the position of the steering wheel and the outside rear view mirrors (for the driver's seat only) is recorded.

Recalling memory positions



Press one of the memory buttons (1 or 2).

Linking driving position memory with door unlock operation (driver's seat only)



While holding down the desired memory button, press and hold **i** on the wireless remote control until you hear a beep.

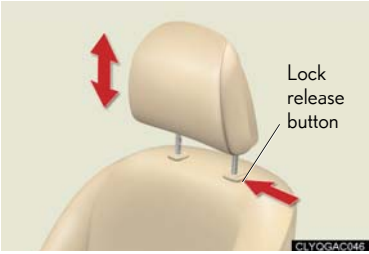
To prevent triggering of the alarm, open one of the doors within 60 seconds after the beep is heard.

Linking driving position memory to the door unlock operation allows the memory position to be recalled automatically when the driver's door is opened. (The linked function does not operate if the driver's door is unlocked using the mechanical key or manually from inside the vehicle.)



Head Restraints

Height adjustment



To raise: pull the head restraint upward.
To lower: push the head restraint down while pressing the lock release button.

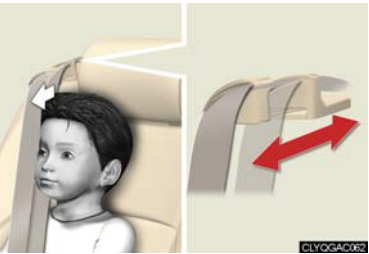
Seatbelts

Adjusting shoulder belt height (front seats only)



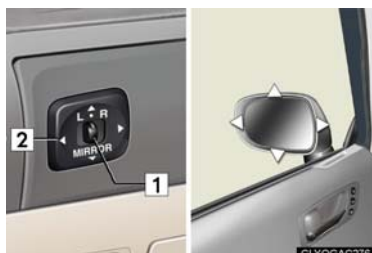
To raise: pull the anchor upward.
To lower: depress the button and push the anchor down.

Seatbelt comfort guides (outside rear seats only)



If the shoulder belt sits close to the neck, slide the comfort guide forward.

Outside Rear View Mirrors



- 1 To select the mirror you wish to adjust (L or R), use the master switch.
- 2 To adjust mirror angle, use the control switch.

On some models, the mirrors will automatically angle downwards when the vehicle is reversing. To disable this function, set the master switch in the neutral position (between L and R).

Anti-glare Inside Rear View Mirror

The anti-glare mirror uses a sensor to detect light from vehicles behind and automatically reduces glare.



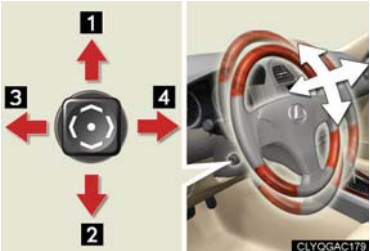
To turn AUTO mode ON/OFF, press the AUTO button.

The indicator comes on when AUTO mode is turned ON.

When the inside rear view mirror is switched to AUTO mode, the outside rear view mirrors are also switched to the AUTO mode automatically.



Steering Wheel



- 1 Up
- 2 Down
- 3 Away from the driver
- 4 Toward the driver

The steering wheel retracts automatically when the “ENGINE START STOP” switch is turned OFF to allow for easy exit and entry. The steering wheel returns automatically to its previously set position when the “ENGINE START STOP” switch is switched to ACCESSORY or IGNITION ON mode.



Topic 3

When Driving

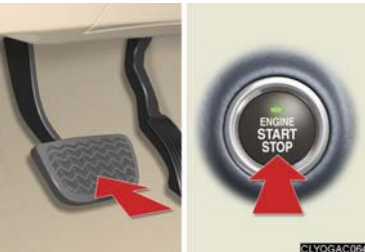
- Starting 17
- Automatic Transmission..... 18
- Parking Brake..... 19
- Emergency Flasher Switch..... 19
- Turn Signal Lever 20
- Intuitive Parking Assist 20
- Multi-information Display..... 21
- Cruise Control 22
- Dynamic Radar Cruise Control..... 23



Starting

With the electronic key on your person, the engine can be started by simply pressing the “ENGINE START STOP” switch, while depressing the brake pedal.
(The mechanical key cannot be used to start the engine.)

Starting the engine



Make sure the parking brake is engaged and the shift lever is in P.

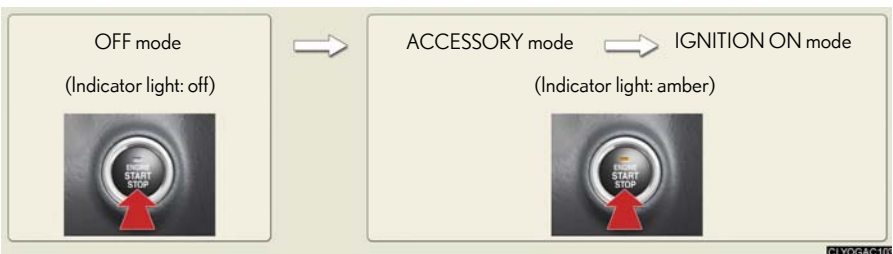
- 1 Depress the brake pedal.
The “ENGINE START STOP” switch indicator light turns green.
- 2 Press the “ENGINE START STOP” switch.

Stopping the engine

- 1 Engage the parking brake and shift the shift lever to P.
- 2 Press the “ENGINE START STOP” switch.

Changing power modes

To change power modes without turning on the engine, press the “ENGINE START STOP” switch without depressing the brake pedal. The modes can be changed in the following order:



Automatic Transmission

Entering and Exiting

Before Driving

When Driving

Rain and Night Driving

Driving Comfort

Opening and Closing

What to do if ...

Customizing Your Lexus

Shift positions



- P Park
- R Reverse
- N Neutral (drive not engaged)
- D Drive
- S S mode

← The vehicle can only be shifted out of P when the “ENGINE START STOP” switch is in IGNITION ON mode and the brake pedal is depressed.

S mode

S mode allows the driver to select the shift range manually based on driving conditions.



- 1 Shift the shift lever to S.



- 2 To upshift: shift the shift lever toward "+".
To downshift: shift the shift lever toward "-".

The selected shift range is displayed on the instrument cluster.



Parking Brake



To set the parking brake: firmly depress the parking brake pedal.

To release the parking brake: depress the parking brake pedal again.

Emergency Flasher Switch

► Without navigation system



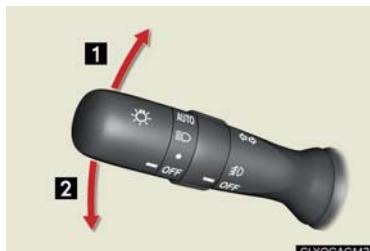
Engaging the emergency flasher switch causes all the turn signal lights to flash.

The emergency flashers can be operated even when the "ENGINE START STOP" switch is OFF.

► With navigation system



Turn Signal Lever



- 1 Right turn signal
- 2 Left turn signal

To signal a lane change, move the lever partway and hold.

Intuitive Parking Assist (If Equipped)

The system uses a screen display and buzzer to inform the driver of obstacles near the vehicle when parking or driving at low speed.

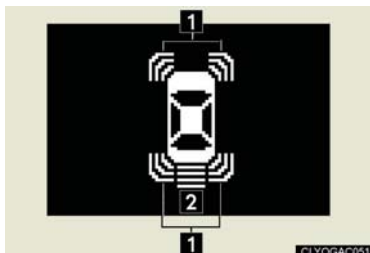
Turning the system on and off



Press the switch.

When ON, an indicator on the switch comes on to inform the driver that the function is operational.

Screen display



Sensors are used to detect obstacles near the vehicle. The distance to a detected obstacle is shown by the number of indicator bars.

- 1 Indicates obstacles detected by the corner sensors
- 2 Indicates obstacles detected by the back sensors



Multi-information Display

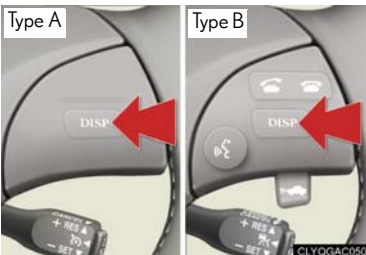
The multi-information display shows information about your vehicle, including the items shown below.

Display information



- Trip information
 - Outside temperature
 - Driving range
 - Average fuel consumption
 - Average fuel consumption after refueling
 - Current fuel consumption
 - Average vehicle speed
- Dynamic radar cruise control settings (if equipped)
- Intuitive parking assist information (if equipped)
- Warning messages

Changing the display of trip information



Trip information items can be switched by pressing the DISP switch.

- When using the intuitive parking assist system or dynamic radar cruise control, the appropriate display is shown on the screen.
- In the event that a problem is detected in any of the vehicle's systems, a warning message is shown on the multi-information display.

Cruise Control (If Equipped)

Cruise control allows the driver to maintain a constant speed without having to operate the accelerator pedal.

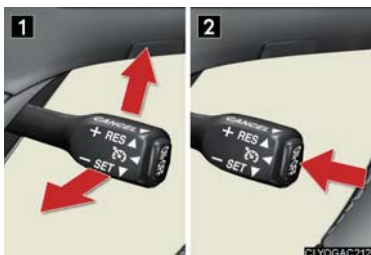
Use for highway driving or when traveling at a constant speed for long periods of time.

Setting the speed



- 1 Press the ON-OFF button.
The system will turn on.
- 2 Accelerate or decelerate to the desired speed, and then push the lever down.
This sets the speed in the cruise control memory.

Canceling



- 1 To temporarily cancel the cruise control, pull the lever toward you. To resume the cruise control, push the lever up.
- 2 To turn the system off, press the ON-OFF button.

Adjusting the speed setting



- To increase speed:** push the lever up.
To decrease speed: push the lever down.

Release the lever when the desired speed is reached.

Dynamic Radar Cruise Control (If Equipped)

Dynamic radar cruise control supplements conventional cruise control with a vehicle-to-vehicle distance control mode.

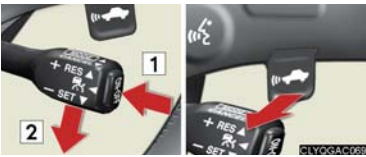
Cruise control display



Cruise control settings are shown on the multi-information display.

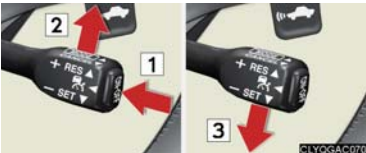
- 1 Vehicle ahead indicator
- 2 Vehicle-to-vehicle distance
- 3 Preset speed

Vehicle-to-vehicle distance control mode



- 1 Press the ON-OFF button.
- 2 Accelerate or decelerate to the desired speed, and then push the lever down. Following distance can be adjusted using the vehicle-to-vehicle distance control switch.

Conventional (constant speed) cruise control mode



- 1 Press the ON-OFF button.
- 2 Push the lever forward and hold for at least one second.
- 3 Accelerate or decelerate to the desired speed, and then push the lever down.

Canceling



To temporarily cancel the dynamic radar cruise control, pull the lever.

To turn the system off, press the ON-OFF button.

Adjusting the speed setting

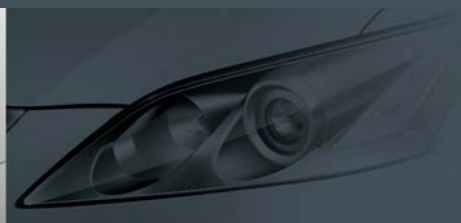


To increase speed: push the lever up.

To decrease speed: push the lever down.

Release the lever when the desired speed is reached.

The vehicle-to-vehicle distance control mode maintains the preset cruising speed as long as no vehicle is detected ahead.

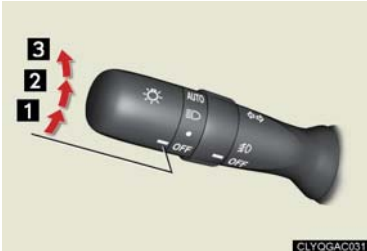


Topic 4

Rain and Night Driving

Headlights.....	25
Fog Lights.....	26
Windshield Wipers and Washers	26
Rear Window and Outside Rear View	
Mirror Defoggers.....	27
Instrument Panel Light Control	27

Headlights



CLYQAC031



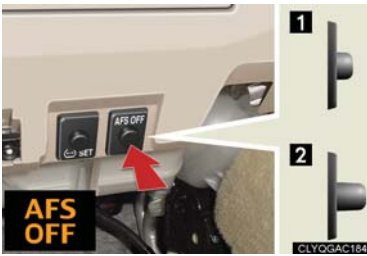
CLYQAC030

- 1 The instrument panel, the side marker, parking, tail and license plate lights turn on.
- 2 The headlights and all lights listed above turn on.
- 3 The headlights and parking lights turn on/off automatically in accordance with ambient light levels.

To engage the high beams, push the lever forward. To flash the high beams, pull the lever and hold.

AFS (Adaptive Front-lighting System) (if equipped)

AFS improves visibility on curves by automatically adjusting the horizontal orientation of the headlights in accordance with vehicle speed and the degree of the tire angle that are controlled by steering input.



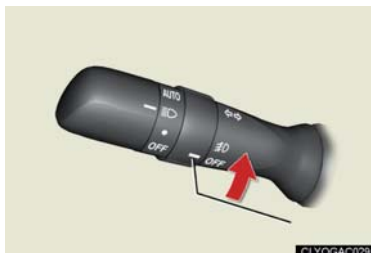
CLYQAC104

To cancel the system, press the AFS OFF button.

- 1 OFF
- 2 ON

The indicator comes on when the system is off.

Fog Lights



The fog lights can be used only when the headlights (low beam) are on.

Windshield Wipers and Washers

Intermittent wiper with interval adjuster (if equipped)



MIST: operates once
INT: intermittent operation*
LO: low speed
HI: high speed
 *: Wiper interval can be adjusted by turning the band.

To spray washer fluid, pull the lever.
 The wipers will operate automatically.

Rain-sensing windshield wipers (if equipped)



MIST: operates once
AUTO: automatic operation*
LO: low speed
HI: high speed
 *: Sensitivity can be adjusted by turning the band.

To spray washer fluid, pull the lever.
 The wipers will operate automatically.

Entering and Exiting

Before Driving

When Driving

Rain and Night Driving

Driving Comfort

Opening and Closing

What to do if ...

Customizing Your Lexus

Rear Window and Outside Rear View Mirror Defoggers

► Without navigation system



To defog the rear window and the outside rear view mirrors, press the button.

Press again to cancel.

► With navigation system



The system turns off automatically after 15 to 60 minutes. The operation time changes according to the ambient temperature and vehicle speed.

Instrument Panel Light Control



1 To brighten: turn the knob upward.

2 To dim: turn the knob downward.

When the headlight switch is turned to ON, the brightness will be reduced slightly unless the control dial is turned fully on.



Topic 5

Driving Comfort

Audio System.....	29
Air Conditioning System.....	32
Garage Door Opener	33
Ashtrays.....	35
Glove Box	35
Auxiliary Box.....	35
Console Boxes.....	36
Interior Lights.....	36
Cup Holders.....	37
Compass.....	37
Seat Heaters and Ventilators	38
Rear Sunshade	38
Trunk Storage Extension.....	39
Luggage Mat.....	39

Audio System

► With navigation system

Owners of models equipped with a navigation system should refer to the “Navigation System Owner’s Manual”.

► Without navigation system

■ Basic operation



- 1 Power/Volume
- 2 Audio sources
- 3 Sound quality modes
Listening position
ASL (Automatic Sound Levelizer)

■ Audio sources

AM·SAT: AM radio/Satellite radio*

FM: FM radio

DISC·AUX: CD player/Auxiliary audio device

*: The optional Lexus genuine satellite tuner and antenna allows you to receive and play XM[®] Satellite Radio broadcasts. (Subscription is required. For detailed information, see the Owner’s Manual.)

■ Radio



- 1 Scan
All radio stations: press
Preset radio stations: press and hold
- 2 Station presets
- 3 Text messages
- 4 Traffic information
- 5 Tune
- 6 RDS genre select
- 7 Seek

■ Entering station presets

- 1 Select the desired station by using the tune, the seek or the scan function.
- 2 Press and hold one of the preset buttons (1~6) until you hear a beep, indicating that the station is set.

CD player

Playing an audio CD



- 1 Eject
- 2 CD load
- 3 Text information
- 4 CD select
- 5 Repeat
 - Current track: press
 - Current CD: press and hold
- 6 Track select/reverse/fast-forward
- 7 Random playback
 - Current CD: press
 - All CDs: press and hold
- 8 Scan
 - All tracks in current CD: press
 - First track of each CD: press and hold

Playing a CD with MP3/WMA files



- 1 Eject
- 2 CD load
- 3 Text information
- 4 Folder select
- 5 File select
- 6 CD select
- 7 Repeat
 - Current file: press
 - Current folders: press and hold
- 8 File select/reverse/fast-forward
- 9 Random playback
 - Current folder: press
 - Current CD: press and hold
- 10 Scan
 - All files in current folder: press
 - First file of each folder: press and hold

Entering and Exiting

Before Driving

When Driving

Rain and Night Driving

Driving Comfort

Opening and Closing

What to do if ...

Customizing Your Lexus



■ Loading a CD

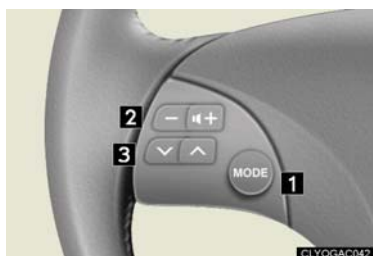
- 1 Press the LOAD button.
WAIT is shown on the display.
- 2 Insert a CD when the indicator on the slot turns from amber to green.
The display changes from WAIT to LOAD.

■ Loading multiple CDs

- 1 Press and hold the LOAD button until you hear a beep.
WAIT is shown on the display.
- 2 Insert a CD when the indicator on the slot turns from amber to green.
The display changes from WAIT to LOAD.
The indicator on the slot turns to amber when the CD is inserted.
- 3 Insert the next CD when the indicator on the slot turns from amber to green again.
Repeat the procedure for the remaining CDs.
To stop the operation, press the DISC·AUX button.

■ Remote control (steering wheel audio switches)

The audio system can be operated using the remote control located on the steering wheel.



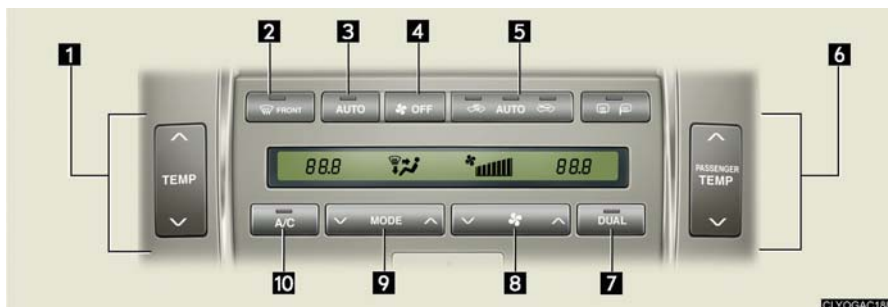
- 1 Power on/change mode: press
Power off: press and hold
- 2 Volume
- 3 Audio source
Radio: radio tuner
CD: disc/track/file (MP3/WMA) select

Air Conditioning System

► With navigation system

Owners of models equipped with a navigation system should refer to the “Navigation System Owner’s Manual”.

► Without navigation system



- | | |
|--------------------------------------------|--------------------------------------|
| 1 Driver side temperature control | 6 Passenger side temperature control |
| 2 Windshield defog/defrost | 7 Dual mode switch |
| 3 Switch to automatic mode | 8 Fan speed controls |
| 4 OFF button | 9 Air flow controls |
| 5 Outside air/recirculated air mode switch | 10 A/C switch |

■ Using the automatic mode



- 1 Press the AUTO button.
- 2 Adjust the temperature using the TEMP button.

■ Adjusting the temperature in DUAL mode



In DUAL mode, driver and passenger side temperature settings can be adjusted separately.

Press the PASSENGER TEMP button to adjust the temperature for the passenger side.

To cancel the DUAL mode, press the DUAL button.

Garage Door Opener

The garage door opener can be programmed to operate garage doors, gates, entry doors, door locks, home lighting systems, security systems, and other devices.

The garage door opener (HomeLink® Universal Transceiver) is manufactured under license from HomeLink®.



The HomeLink® compatible transceiver in your vehicle has 3 buttons which can be programmed to operate 3 different devices.

Programming HomeLink®



- 1 Hold your hand-held transmitter within 3 inches of the HomeLink® buttons.
- 2 Press and hold down the desired HomeLink® button.
- 3 For U.S.A. owners:

While pressing the HomeLink® button, press and hold down the button on the hand-held transmitter until the indicator light changes from a slow to a rapid flash.

For Canadian owners:

While pressing the HomeLink® button, repeatedly press and release (cycle) the button on the hand-held transmitter every 2 seconds until the indicator light changes from a slow to a rapid flash.

If your garage door has the rolling code feature:

- 4 Press the training button on the motor-head unit in your garage.
- 5 Press and release the programmed HomeLink® button twice. The garage door may open.

If the door does not open, press and release the same button once again.

■ Programming other devices

For U.S.A. owners:

To program an entry gate, see the Owner's Manual.

To program other devices, contact your Lexus dealer.

For Canadian owners:

To program all other devices, follow the same procedure as for garage door programming.

■ Operating HomeLink®



Press the appropriate HomeLink® button.
The indicator light should come on.

Entering and Exiting

Before Driving

When Driving

Rain and
Night Driving

Driving Comfort

Opening and Closing

What to do if ...

Customizing
Your Lexus



Ashtrays



To remove the ashtray, push the back part of the lid and pull the ashtray upwards.

Glove Box



- 1 Open: press the button.
- 2 Lock
- 3 Unlock

The glove box can be locked and unlocked using the mechanical key.

Auxiliary Box



To open, press down the knob.

Console Boxes



CLY0GAC181

► Front

To open, press the button.

To close, pull up the lever.



CLY0GAC273

► Overhead console box

To open, press the lid.

There is a power outlet located in the front console box.



Interior Lights



CLY0GAC274

1 Door position ON/OFF

2 ON/OFF



Cup Holders



► Front

To open, press down on the front of the lid.



► Rear

To open, pull up the knob.

Compass



To display the compass, press and hold the AUTO button for 3 or more seconds.

To cancel the display, press and hold the AUTO button again for 3 or more seconds.

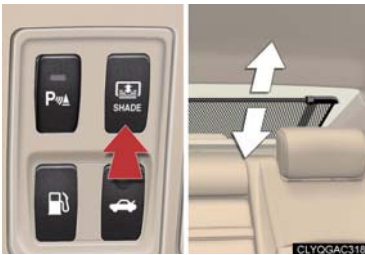
Seat Heaters and Ventilators (If Equipped)



Seat heaters: turn the dial toward **1**.
Ventilators: turn the dial toward **2**.

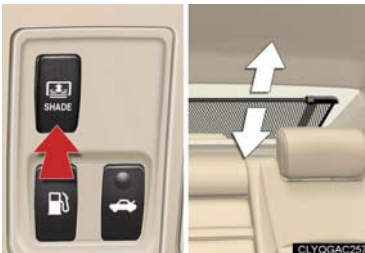
Rear Sunshade (If Equipped)

► Type A



To raise the rear sunshade, press the switch.
Press the switch again to lower it.

► Type B



The sunshade automatically lowers to ensure visibility when reversing.

Entering and Exiting

Before Driving

When Driving

Rain and
Night Driving

Driving Comfort

Opening and Closing

What to do if ...

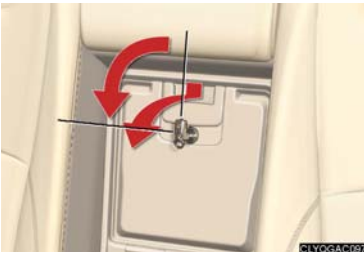
Customizing
Your Lexus

Trunk Storage Extension

Longer items can be loaded in the vehicle by utilizing the trunk space and rear seat area.



1 Pull down the rear armrest.



2 Unlock the armrest door using the mechanical key.

Luggage Mat



Pull the lever upwards when lifting the luggage mat up.



The lever can be hooked on the edge of the trunk.



Topic 6

Opening and Closing

Door Locks	41
Power Windows	42
Trunk	42
Fuel Tank Cap	43
Hood	43
Moon Roof	44

Door Locks

Locking the vehicle from inside



▶ Inside lock button

- 1 Locks
- 2 Unlocks



▶ Door lock switch

Operates all door locks.

- 1 Locks
- 2 Unlocks

Locking the vehicle from outside

- ▶ Using the entry function or wireless remote control (→P.7, 8)

Rear door child-protector lock



Setting the switch to the LOCK position prevents the rear doors from being opened from the inside.

Always set the child protector locks when children are seated in the rear seat.

Power Windows



1 Power window switches

To open: press the switch.

To close: pull the switch up.

Fully pulling up and releasing the switches causes the windows to close fully. Fully pressing down and releasing the switches causes the windows to open fully.

2 Window lock switch

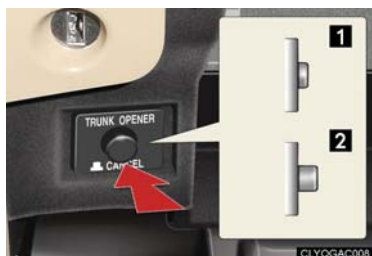
The window lock switch disables the operation of all windows other than the driver's door window.

Trunk

Trunk opener



To open the trunk from inside the cabin, simply press the trunk opener.



To disable the trunk opener, turn OFF the main switch in the glove box.

1 ON

2 OFF

When the trunk opener is disabled, the trunk cannot be opened using the wireless remote control or the entry function.

Entry function and wireless remote control

→P.7, 8

Fuel Tank Cap



1 Press the fuel filler door opener.



2 Slowly remove the cap by turning it counter-clockwise.

After the cap is removed, it can be hung on the inside of the fuel filler door.

Hood



1 Pull the hood release lever.



2 Insert your fingers under the hood, pull the hood catch up and lift the hood.

Moon Roof

Standard type



► Opening and closing

- 1** Opens
The moon roof stops slightly before the fully opened position.
To fully open, press the switch again.
- 2** Closes



► Tilt up and down

- 1** Tilts up
- 2** Tilts down

Glass type



► Opening and closing

- 1** Opens
- 2** Closes (press and hold)
The moon roof stops once.
To fully close, push and hold the switch again.



► Tilt up and down

- 1** Tilts up
- 2** Tilts down (press and hold)

List of Warning/Indicator Lights



The units used on the speedometer, the tachometer gauge display, indicators and warning lights may differ depending on the model / type.

Stop the vehicle immediately. Continuing to drive the vehicle may be dangerous.



(USA)

Brake system warning light



(Canada)

Stop the vehicle immediately.



Charging system warning light



(USA)

Malfunction



(Canada)

indicator lamp

Have the vehicle inspected immediately.



SRS warning light

PCS

Pre-collision system
warning light *1



(USA)

ABS warning light



(Canada)

For further information, refer to the Owner's Manual.

Follow the correction procedure.



Open door warning light



Front passenger's seat belt reminder light *2



Low fuel level warning light



(On the center cluster)

Front passenger's seat belt reminder light *3



Driver's seat belt reminder light



Low tire pressure warning light



Rear light failure warning light



Master warning light

See the Owner's Manual



Turn signal indicator



Cruise control indicator



Headlight high beam indicator



AFS OFF indicator *1



Headlight indicator (USA)



Slip indicator



Tail light indicator (Canada)



SRS airbag on-off indicator *2



Front fog light indicator



SRS airbag on-off indicator *3



Shift position and shift range indicators

*1: If equipped

*2: With navigation system

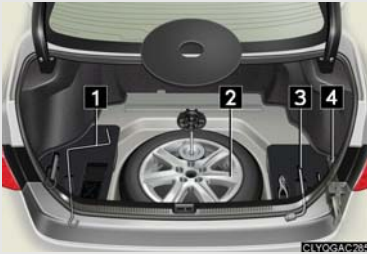
*3: Without navigation system

For further information, refer to the Owner's Manual.

Spare Tire and Tool Compartment

Jack, tools, and spare tire

▶ Ground spare tire



- 1 Jack handle
- 2 Spare tire
- 3 Wrench
- 4 Jack

▶ Compact spare tire



- 1 Jack handle
- 2 Spare tire
- 3 Wrench
- 4 Jack

Taking out the spare tire



- 1 Lift up the luggage mat, and remove the spare wheel cover.
- 2 Loosen the center fastener and remove the spare tire.

If the electronic key does not operate properly

Unlocking and locking the doors



To unlock or lock the vehicle, use the mechanical key to remove the lock cover on the driver's door handle. The mechanical key is stored inside the electronic key.

- 1 Locks
- 2 Unlocks

Starting the engine



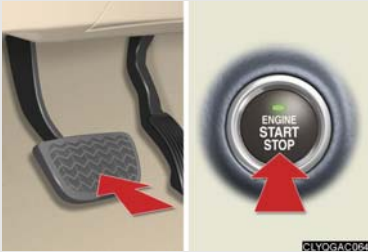
- 1 Depress the brake pedal.
- 2 Touch the Lexus emblem side of the electronic key to the "ENGINE START STOP" switch.
- 3 Press the "ENGINE START STOP" switch within 10 seconds of the buzzer, keeping the brake pedal depressed.

If the electronic key battery becomes depleted, replace it with a new battery. For instructions on replacing the battery, refer to the Owner's Manual. If you need further assistance, contact your Lexus dealer.

What to do if ...

If the engine doesn't start

Make sure that the correct operating procedures have been followed.



Brake pedal

Make sure that the brake pedal is firmly depressed when attempting to start the engine. (→P.17)



Steering wheel lock

Make sure that the steering wheel lock is released.

To release the steering wheel lock, gently turn the wheel left or right while pressing the "ENGINE START STOP" switch.

If the engine still does not start, see the Owner's Manual for more information or contact your Lexus dealer.

Electronic Key Alarm

The electronic key alarm uses an alarm and warning messages to indicate that the electronic key has been used improperly. Take appropriate measure in response to any warning messages that are displayed. In some cases, an alarm may sound without an accompanying warning message. If so, follow the correction procedure in the table below.

Alarm	Situation	Correction procedure
Exterior alarm sounds once for 2 seconds	Tried to lock the doors using the entry function while the electronic key is still inside the passenger compartment	Retrieve the electronic key from the passenger compartment and lock the doors again.
	Closed the trunk while the electronic key is still inside the trunk and all doors are locked	Retrieve the electronic key from the trunk and close the trunk lid.
Exterior alarm sounds once for 60 seconds	Tried to exit the vehicle with the electronic key and lock the doors without first turning the "ENGINE START STOP" switch OFF	Turn the "ENGINE START STOP" switch OFF and lock the doors again.
Exterior alarm sounds once for 10 seconds	Tried to lock the vehicle using the entry function while a door is open	Close all of the doors and lock the doors again.
Exterior alarm sounds once for 3 seconds and interior alarm sounds continuously	When the "ENGINE START STOP" switch is in ACCESSORY or IGNITION ON mode, an attempt was made to open the door and exit the vehicle, and the shift lever was not in P	Shift the shift lever to P.
Interior alarm pings continuously	Turned the "ENGINE START STOP" switch to ACCESSORY mode while the driver's door is open (Opened the driver's door when the "ENGINE START STOP" switch is in ACCESSORY mode.)	Turn the "ENGINE START STOP" switch OFF and close the driver's door.
	Turned the "ENGINE START STOP" switch OFF while the driver's door is open	Close the driver's door.

Customizing Your Lexus

Your vehicle includes a variety of electronic features that can be personalized to your preferences. Programming these preferences requires specialized equipment and may be performed by an authorized Lexus dealership.

Some function settings are changed simultaneously with other functions being customized. Contact your Lexus dealer for further details.

Item	Function	Default setting	Customized setting
Smart access system with push-button start	Smart access system with push-button start	ON	OFF
	Operation signal (Emergency flashers)	ON	OFF
	Operation signal (Buzzer)	ON	OFF
Wireless remote control	Wireless remote control	ON	OFF
	Unlocking operation	Driver's door unlocked in one step, all doors unlocked in two steps	All doors unlocked in one step
	Automatic door lock function to be activated if door is not opened after being unlocked	ON	OFF
	Time elapsed before automatic door lock function is activated if door is not opened after being unlocked	60 seconds	30 seconds
			120 seconds
	Operation signal (Emergency flashers)	ON	OFF
	Operation signal (Buzzer volume)	Level 8	Level 1 to 8
	Door lock buzzer	ON	OFF
	Trunk unlocking function	ON	OFF
	Trunk unlocking operation	Push and hold	Push twice
			One push
Panic function	ON	OFF	

Item	Function	Default setting	Customized setting
Door lock	Unlocking using a key	Driver's door unlocked in one step, all doors unlocked in two steps	All doors locked in one step
	Speed-detecting automatic door lock function	OFF	ON
	Opening driver's door unlocks all doors	OFF	ON
	Shifting gears to P unlocks all doors	ON	OFF
	Shifting gears to position other than P locks all doors	ON	OFF
Power windows	Linked mechanical key operation	ON (Open and close)	OFF Open only Close only
	Wireless remote control linked operation	ON (Open only)	OFF
	Linked entry function	ON	OFF
Moon roof (Standard type)	Linked mechanical key operation	ON (Open and close)	OFF Open only Close only
	Linked operation of components when mechanical key is used	Slide only	Tilt only
	Wireless remote control linked operation	ON (Open only)	OFF
	Linked operation of components when wireless remote control used	Slide only	Tilt only
	Linked entry function	ON	OFF
Automatic light control system	Light sensor sensitivity	Level 3	Levels 1 to 5
	Time elapsed before headlights automatically turn off after doors are closed	30 seconds	0 seconds
			60 seconds 90 seconds

Entering and Exiting

Before Driving

When Driving

Rain and Night Driving

Driving Comfort

Opening and Closing

What to do if ...

Customizing Your Lexus

Customizing Your Lexus

Item	Function	Default setting	Customized setting
Lights	Daytime running lights system (USA only)	ON	OFF
Intuitive parking assist	Back sensor operation display and buzzer	ON	OFF
	Buzzer volume	Level 3	Level 1 to 5
	Distance which a sensor detects	4.5 ft. (150 cm)	1.8 ft. (60 cm)
Illumination	Time elapsed before lights turn off	15 seconds	7.5 seconds 30 seconds
	Operation when the doors are unlocked	ON	OFF
	Operation after the "ENGINE START STOP" switch turned OFF	ON	OFF
	Front foot well lighting	ON	OFF
	Outer foot light	ON	OFF
Seat belt reminder	Vehicle speed linked seat belt reminder buzzer	ON	OFF

Multi-information display

Country	Available languages
Canada	English and French



Your Lexus dealer

Your Lexus dealer will provide quality maintenance and any other assistance you may require.

If there is not a Lexus dealer near you, please call the following number:

■ U.S. OWNERS

- In the U.S. mainland or Canada:

Lexus Roadside Assistance

1-800-25-LEXUS or **1-800-255-3987** (Toll-Free)

- In Hawaii:

Servco Automotive Roadside Assistance/Customer Services

1-800-25-LEXUS or **1-800-255-3987** (Toll-Free)

■ CANADIAN OWNERS

- In Canada or the U.S. mainland:

Lexus Roadside Assistance/Customer Service

1-800-26-LEXUS or **1-800-265-3987** (Toll-Free)

Please access our **websites** for further information.

- The U.S. mainland: www.lexus.com
- Hawaii: www.servcolexus.com
- Canada : www.lexus.ca

©2007 TOYOTA MOTOR CORPORATION

All rights reserved. This material may not be reproduced or copied, in whole or in part, without the written permission of Toyota Motor Corporation.